

How to Use the Scribble Tool in Microsoft PowerPoint

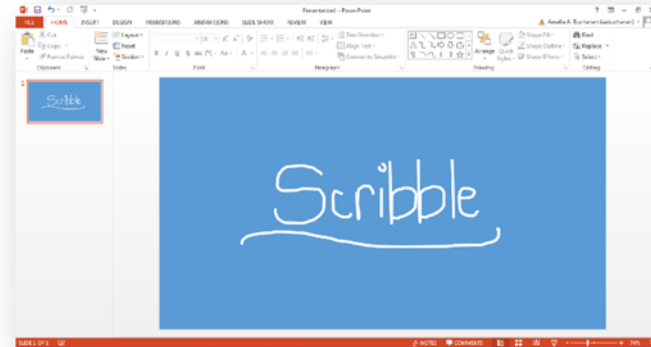
Using Windows 7

What is the Scribble Tool?

The scribble tool allows you to draw freeform shapes on a slide.

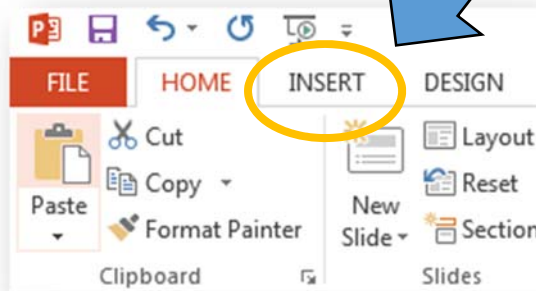
You might find this handy when you want to:

1. Draw an unusual shape
2. Draw a picture



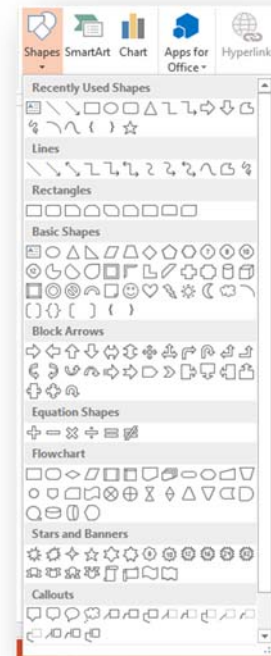
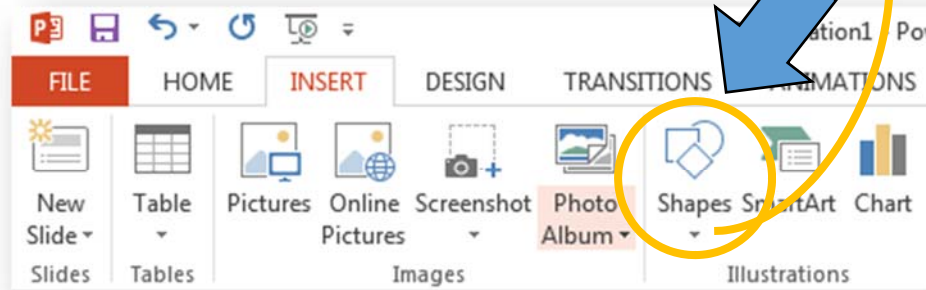
1

To locate the scribble tool - click on the **INSERT** tab



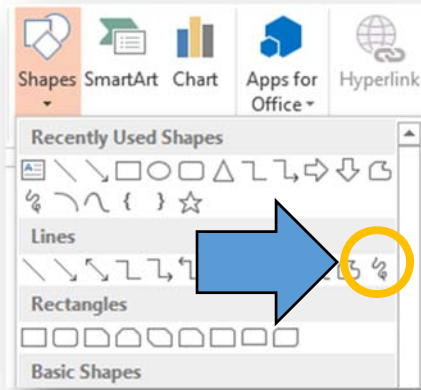
2

Find the **SHAPES** feature and click to pull down the drop menu.



3

Locate the SCRIBBLE tool - located under the Lines category.



4

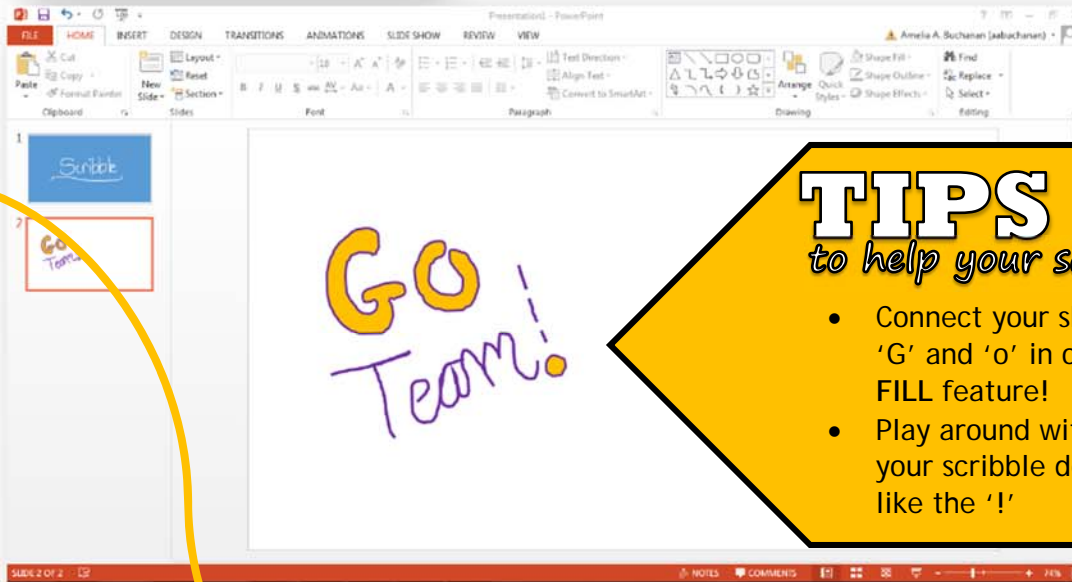
Once the scribble tool has been selected, your mouse will become this pencil icon.



5

Draw your desired freeform shape(s).

Use the **FORMAT/Drawing Tools** menu to customize your scribble freeform.



TIPS

to help your scribble stand out

- Connect your shape together (like the 'G' and 'o' in order to use the **SHAPE FILL** feature!
- Play around with line **DASHES** to make your scribble dotted, dashed or lined like the '!'

